

Dear Parents and carers



## Spring Term Newsletter 2– Friday 27<sup>th</sup> January 2023

| January 2023                                 |                                                                      |
|----------------------------------------------|----------------------------------------------------------------------|
| Friday 27 <sup>th</sup> January              | Whole school Art Exhibition at the Guildhall                         |
| Monday 30 <sup>th</sup> January              | KS1 Circus skills day<br>Y6 Nurse visit to talk about Healthy living |
| February 2023                                |                                                                      |
| Friday 3 <sup>rd</sup> February              | Chard Library visiting Foundation Stage                              |
| Tuesday 7 <sup>th</sup> February             | Safer Internet Day                                                   |
| Friday 10 <sup>th</sup> February             | At the end of the day children break up for half term                |
| Wednesday 22 <sup>nd</sup> February at 15:30 | Y5 Magdalen Residential meeting for parents                          |
| March 2023                                   |                                                                      |
| Thursday 9 <sup>th</sup> March               | Y4 Day trip to Magdalen Farm                                         |
| Wednesday 15 <sup>th</sup> March             | Y4 trip to Taunton museum                                            |
| Monday 27 <sup>th</sup> March at 16:00       | Y4 & Y5 performance of Cinderella Rockerfella to parents             |
| Tuesday 28 <sup>th</sup> March at 13:30      | Y4 & Y5 performance of Cinderella Rockerfella to parents             |

### Art Exhibition – A message from Mrs Morton

Today we held our fifth annual public Art Exhibition at the Guildhall. Our Arts Councillors hosted the event, sharing their work with members of the public and their friends from school. The Mayor, Cllr Jenny Kenton also visited and was really impressed with all the artwork and how confident and well-mannered our Arts Councillors were. It was wonderful to see so many parents, grandparents and members of the public enjoying our talented children's work.



### NEU Strike action

Earlier this week we sent a letter home to explain the implications of the NEU strike on the education of the children within our school. In this letter we explained that these national strikes are extremely unlikely to have any impact on the education that we provide for our children. Please be assured that we will not require to close any classrooms on the day of the National Strikes.



### Rock up & Read! – A message from Mrs Terry

Thank you to all the parents, carers and wider family and friends who were able to listen to our children read over the last two weeks. It was lovely to see the hall bubbling with stories, laughter and enjoyment for a range of books with every year group's turn. We will be repeating the sessions next half term, but in the morning to allow an opportunity for parents who work in the afternoon to attend. We will inform you of these dates in the next newsletter.

A reminder that we expect all of our pupils to read at home five times a week.

### Successful planning application for two new classrooms

Last week we were informed that our planning application to build two new classrooms has been successful. The process for construction businesses to tender for the work will commence soon and we hope that the work will begin by the end of this academic year. We are looking forward to having two new classrooms that can be used by the children within our school community.

### Fun in the snow

We were all surprised by the sudden downpour of snow last Wednesday and as you can imagine we had a lot of very excited children who wanted to go out and play in it. The snow lasted for no more than an hour, so we all put our pencils down and closed our books for a short period and went outside to play in it. Children and staff alike enjoyed the experience, and we hope that many positive memories were made for the children.



### Year 4 Stargazing as part of the Manor Court 48

Year 4 had a fun and informative star gazing evening on Thursday. Unfortunately, it was too cloudy to go outside but the children still enjoyed looking at the telescopes and learning about astronomy. The hot chocolate and biscuits went down a treat too!

---

We take child protection extremely seriously at our school. If you have a concern, you can speak to any of the school's designated and trained Child Protection officers: Mr Clode, Miss Gregory, Mrs Terry, Mrs Wilkins, or Mr Talmage. Alternatively, you can ring Children Social Care on 0300 123 2224 or email [childrens@somerset.gov.uk](mailto:childrens@somerset.gov.uk)

## Pupil Premium

The pupil premium is additional funding that the Government provides for each child who is believed to be disadvantaged in achieving their best in education. At Manor Court Primary School, we provide high quality education and enrichment opportunities for all our pupils regardless of ability or background. However, it is useful to receive this funding for all children entitled to it. If your children are entitled to free school meals or a member of the household is currently in receipt, or has been in the last six years, of Universal credit then please do apply through this hyperlink <https://secure1.somerset.gov.uk/forms/PortalShowForm.asp?formalias=freeschoolmeal>

## Year group emails – not Eylog for EYF and Foundation Stage children

The introduction of year group emails was important at the start of the pandemic as this enabled us to relay messages to parents in a swift manner. We have considered what is happening in other schools locally and nationally and considered the number of emails that each year group receive each week and have concluded that the year group email addresses are no longer required.

As of Monday 16<sup>th</sup> January, these email addresses will no longer be receiving emails and all communication from school to home will be made through the school office. Important information will be sent home via ParentPay or email and all letters will be uploaded to the school website. If you need to speak to your child's teacher, please speak to them at the end of the school day or arrange for the school office to give them a message to contact you at a time that is convenient for them.



### Year 4 dance workshop

A select few of our Year 4 children attended a dance workshop at Holyrood Academy on Tuesday. The children joined children in other local primary schools to learn a dance routine and perform this to a small audience. The children had an enjoyable time dancing in the studio.

## Year 5 visit to Sainsbury's

Year 5 visited Sainsbury's on Monday as part of their Geography field work. They were given a list of fruit and vegetables to discover their country of origin, before calculating the food miles travelled and consequent carbon generated by this. They found out that the onions and potatoes were grown locally but the coconut produced the most pollution, having to be flown over from Sri Lanka! Thank you, Chard Sainsbury's, for allowing us to visit.



## School shoes

We have noticed that a number of children are coming to school each day wearing trainers and ankle boots. This is not school uniform or appropriate footwear for the children to be wearing to school. Please be prepared for a member of staff to mention the footwear to you and ask when your child will be attending school in appropriate footwear.



### Wrap around care telephone number

The telephone number for our wrap around care provision (breakfast & after school club) has changed this week to **07471 412147** Please save this telephone number to your phone if you use wrap around care.

We are also having a number of parents regularly giving us less than four hours' notice that their child requires to use the breakfast or after school club. To ensure that we have the correct ratios please ensure that you contact the school office the day before you require club. We appreciate that emergencies sometimes happen.

# A GREAT PLACE TO BE...

### Over subscribed for Foundation Stage intake 2023

We were delighted to receive our September 2023 list of preferences on Tuesday morning. 62 parents chose Manor Court as their first preference and 22 chose us as their second preference.

We can now say that we are an oversubscribed school for the first time (according to Somerset LA) in 22 years!

If you have applied for a place at Manor Court, you will be informed (at the same time as us) in April if you have been successful in your desire for your child to start their education with us in September.

Manor Court is the place to be!

## School term dates for 2023-2024

Our school term dates for the 2023-2024 school year have been published on our school website and shared via our social media accounts. Please find these at the end of this newsletter for your information.

---

We take child protection extremely seriously at our school. If you have a concern, you can speak to any of the school's designated and trained Child Protection officers: Mr Clode, Miss Gregory, Mrs Terry, Mrs Wilkins, or Mr Talmage. Alternatively, you can ring Children Social Care on 0300 123 2224 or email [childrens@somerset.gov.uk](mailto:childrens@somerset.gov.uk)

## EYC news from Stacey

The children have been very excited to learn about Chinese New Year last week. We'd like to say thank you to the parent who brought in their rabbit for the children to see and learn about.

Thank you to those parents who attended our rock up and read sessions. We hope you've enjoyed this experience with your children.

Next week it is national story telling week. We will be looking at lots of different stories, including some of their favourites.



## PE Days

Our PE Days have been set for this half term and are unlikely to be changed, if we need to change them, we will inform you through your Eylog or ParentPay account. Children should wear their PE kits to school on the days listed below. We have noticed that some children are wearing their PE hoodies into school on different days and on all other days it is important that full school uniform is worn.

| Classes                  | PE Day on which PE Kits must be worn |
|--------------------------|--------------------------------------|
| Squirrels & Hedgehogs    | Tuesday                              |
| Dragonflies & Bumblebees | Thursday                             |
| Nightingales & Magpies   | Friday                               |
| Owls & Kingfishers       | Wednesday & Thursday                 |
| Eagles & Puffins         | Wednesday & Friday                   |
| Foxes & Badgers          | Monday & Friday                      |
| Hérons & Otters          | Monday & Friday                      |



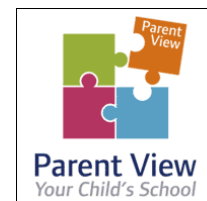
## Online safety news from Miss Thompson

Internet Matters have created a useful guide to the parental features available on Epic. Epic is a games store and games-playing platform which includes games like Fortnite, Fall Guys and Rocket League. The parental features include restrictions on chatting, in-app purchasing and inappropriate content. You can find the guide

here: <https://www.internetmatters.org/parental-controls/gaming-consoles/epic-games-store-parental-controls-guide/>

## Ofsted Parent view

Parent view is a way in which Ofsted surveys the parents of children within a school to find out their views of the school and how it can be improved further. These opinions become part of the overall judgment of the school. If you would like to pass on your opinions to Ofsted, please complete the survey on the parent view website. The website can be found at [www.parentview.ofsted.gov.uk](http://www.parentview.ofsted.gov.uk)



## Carparking at the front of the school

It is becoming increasingly dangerous at the front of the school at drop off and collection time. This is because several parents are choosing to mount the pavement to enable their children to get out of the car! It is important that this inconsiderate behaviour stops and parents who have been doing this obtain a free permit for Sainsburys carpark.



## Attendance our school expectations. A message from Miss Gregory (Early intervention & attendance officer)

Pupil attendance and punctuality is a key focus and priority within our school. Individual attendance will be monitored and reviewed on a bi-weekly basis. We would like to kindly remind parents that the school's expectations on individual pupil attendance is 95% and above, with the aim of having 100% pupil attendance. Should your child fall behind the school's expectations a monitoring process is triggered, and we may ask

you to come into school to discuss your child's attendance with us. Should you have any questions or concerns relating to your child's attendance please do not hesitate to contact me within the school.

## Foundation Stage Gingerbread men

Last week the children in foundation stage were focusing on 'The Gingerbread man'. The children made gingerbread men and decorated them. Mr Talmage was so impressed and wanted to make some himself, so the children have written a set of instructions to help him!



## Tennis Coaching

We have been fortunate enough to have a coach from Chard Tennis Club come into our school to run one of our after-school enrichment clubs. They are now offering a discount to each of our pupils at Manor Court for their February half term camp on Friday 17<sup>th</sup> February. Please see the poster at the end of the newsletter for more information.

## Safeguarding

Safeguarding is the responsibility of everybody. In terms of keeping children safe, please “Don’t think “What if I’m wrong Think... ‘What if I am right” If you have any concerns about a pupil, you should report this to a member of staff immediately. If you feel a pupil is at risk or a subject of abuse, you must contact the Designated Safeguarding Team immediately. The Designated Safeguarding Lead is Mr Clode and Deputy Designated Safeguard leads are Miss Gregory, Mrs Terry, Mrs Wilkins, and Mr Talmage. The school Safeguarding and Child Protection Governor is Mrs Sue Wakeman.

**Safeguarding  
is everyone's  
responsibility**

## Burns Night Assembly

Miss Williams (an Exeter University PGCE Student) and some confident pupils from Foxes class led our whole school ‘Zoom’ assembly on Wednesday about Robert Burns and why people in Scotland celebrate Burns Night.

## Window Wonderland

Over the past two weeks, Otters and Herons have made lace designs with local artist Richard Tomlinson for the Window Wonderland project managed by Somerset artworks. The final project will be displayed in Chard town centre in the next couple of month. Please see the poster at the end of this newsletter for more information.



Thank you for your continued support.

Mr Luke Talmage  
Head Teacher

Mr Alan Clode  
Deputy Head and Inclusion Leader

# Manor Court Community Primary School

## 2023-2024 Term Dates & Holidays



| September 2023 |  |   |    |    | October 2023 |    |    |   |   | November 2023 |    |    |    |    |   |    |    |    |    |    |
|----------------|--|---|----|----|--------------|----|----|---|---|---------------|----|----|----|----|---|----|----|----|----|----|
| M              |  |   | 4  | 11 | 18           | 25 | M  |   | 2 | 9             | 16 | 23 | 30 | M  |   |    | 6  | 13 | 20 | 27 |
| Tu             |  |   | 5  | 12 | 19           | 26 | Tu |   | 3 | 10            | 17 | 24 | 31 | Tu |   |    | 7  | 14 | 21 | 28 |
| W              |  |   | 6  | 13 | 20           | 27 | W  |   | 4 | 11            | 18 | 25 |    | W  | 1 | 8  | 15 | 22 | 29 |    |
| Th             |  |   | 7  | 14 | 21           | 28 | Th |   | 5 | 12            | 19 | 26 |    | Th | 2 | 9  | 16 | 23 | 30 |    |
| F              |  | 1 | 8  | 15 | 22           | 29 | F  |   | 6 | 13            | 20 | 27 |    | F  | 3 | 10 | 17 | 24 |    |    |
| Sa             |  | 2 | 9  | 16 | 23           | 30 | Sa |   | 7 | 14            | 21 | 28 |    | Sa | 4 | 11 | 18 | 25 |    |    |
| Su             |  | 3 | 10 | 17 | 24           |    | Su | 1 | 8 | 15            | 22 | 29 |    | Su | 5 | 12 | 19 | 26 |    |    |
| December 2023  |  |   |    |    | January 2024 |    |    |   |   | February 2024 |    |    |    |    |   |    |    |    |    |    |
| M              |  |   | 4  | 11 | 18           | 25 | M  |   | 1 | 8             | 15 | 22 | 29 | M  |   |    | 5  | 12 | 19 | 26 |
| Tu             |  |   | 5  | 12 | 19           | 26 | Tu |   | 2 | 9             | 16 | 23 | 30 | Tu |   |    | 6  | 13 | 20 | 27 |
| W              |  |   | 6  | 13 | 20           | 27 | W  |   | 3 | 10            | 17 | 24 | 31 | W  |   |    | 7  | 14 | 21 | 28 |
| Th             |  |   | 7  | 14 | 21           | 28 | Th |   | 4 | 11            | 18 | 25 |    | Th | 1 | 8  | 15 | 22 | 29 |    |
| F              |  | 1 | 8  | 15 | 22           | 29 | F  |   | 5 | 12            | 19 | 26 |    | F  | 2 | 9  | 16 | 23 |    |    |
| Sa             |  | 2 | 9  | 16 | 23           | 30 | Sa |   | 6 | 13            | 20 | 27 |    | Sa | 3 | 10 | 17 | 24 |    |    |
| Su             |  | 3 | 10 | 17 | 24           | 31 | Su |   | 7 | 14            | 21 | 28 |    | Su | 4 | 11 | 18 | 25 |    |    |
| March 2024     |  |   |    |    | April 2024   |    |    |   |   | May 2024      |    |    |    |    |   |    |    |    |    |    |
| M              |  |   | 4  | 11 | 18           | 25 | M  |   | 1 | 8             | 15 | 22 | 29 | M  |   |    | 6  | 13 | 20 | 27 |
| Tu             |  |   | 5  | 12 | 19           | 26 | Tu |   | 2 | 9             | 16 | 23 | 30 | Tu |   |    | 7  | 14 | 21 | 28 |
| W              |  |   | 6  | 13 | 20           | 27 | W  |   | 3 | 10            | 17 | 24 |    | W  | 1 | 8  | 15 | 22 | 29 |    |
| Th             |  |   | 7  | 14 | 21           | 28 | Th |   | 4 | 11            | 18 | 25 |    | Th | 2 | 9  | 16 | 23 | 30 |    |
| F              |  | 1 | 8  | 15 | 22           | 29 | F  |   | 5 | 12            | 19 | 26 |    | F  | 3 | 10 | 17 | 24 | 31 |    |
| Sa             |  | 2 | 9  | 16 | 23           | 30 | Sa |   | 6 | 13            | 20 | 27 |    | Sa | 4 | 11 | 18 | 25 |    |    |
| Su             |  | 3 | 10 | 17 | 24           | 31 | Su |   | 7 | 14            | 21 | 28 |    | Su | 5 | 12 | 19 | 26 |    |    |
| June 2024      |  |   |    |    | July 2024    |    |    |   |   | August 2024   |    |    |    |    |   |    |    |    |    |    |
| M              |  |   | 3  | 10 | 17           | 24 | M  |   | 1 | 8             | 15 | 22 | 29 | M  |   |    | 5  | 12 | 19 | 26 |
| Tu             |  |   | 4  | 11 | 18           | 25 | Tu |   | 2 | 9             | 16 | 23 | 30 | Tu |   |    | 6  | 13 | 20 | 27 |
| W              |  |   | 5  | 12 | 19           | 26 | W  |   | 3 | 10            | 17 | 24 | 31 | W  |   |    | 7  | 14 | 21 | 28 |
| Th             |  |   | 6  | 13 | 20           | 27 | Th |   | 4 | 11            | 18 | 25 |    | Th | 1 | 8  | 15 | 22 | 29 |    |
| F              |  |   | 7  | 14 | 21           | 28 | F  |   | 5 | 12            | 19 | 27 |    | F  | 2 | 9  | 16 | 23 | 30 |    |
| Sa             |  | 1 | 8  | 15 | 22           | 29 | Sa |   | 6 | 13            | 20 | 27 |    | Sa | 3 | 10 | 17 | 24 | 31 |    |
| Su             |  | 2 | 9  | 16 | 23           | 30 | Su |   | 7 | 14            | 21 | 28 |    | Su | 4 | 11 | 18 | 25 |    |    |

### Key:

|                                                                                                                               |                |
|-------------------------------------------------------------------------------------------------------------------------------|----------------|
| <span style="background-color: #008080; width: 15px; height: 10px; display: inline-block;"></span>                            | School Holiday |
| <span style="background-color: #800040; width: 15px; height: 10px; display: inline-block;"></span>                            | Bank Holiday   |
| <span style="background-color: #ffffff; border: 1px solid #000000; width: 15px; height: 10px; display: inline-block;"></span> | Term Time      |
| <span style="background-color: #ffff00; width: 15px; height: 10px; display: inline-block;"></span>                            | Inset Days     |

### Term dates summary:

**Term 1:** 04 September – 20 October 2023 (35 days)  
**Term 2:** 30 October – 15 December 2023 (35 days)  
**Term 3:** 02 January – 9 February 2024 (29 days)  
**Term 4:** 19 February – 28 March 2024 (29 days)  
**Term 5:** 15 April – 24 May 2024 (29 days)  
**Term 6:** 03 June – 24 July 2024 (38 days) **TOTAL = 195**

### Bank and public holidays 2023/24

|                            |                  |                      |                |
|----------------------------|------------------|----------------------|----------------|
| Christmas Day Bank Holiday | 25 December 2023 | Easter Monday        | 1 April 2024   |
| Boxing Day Bank Holiday    | 26 December 2023 | May Day Bank Holiday | 06 May 2024    |
| New Year's Day Holiday     | 01 January 2024  | Spring Bank Holiday  | 27 May 2024    |
| Good Friday                | 29 March 2024    | Summer Bank Holiday  | 26 August 2024 |



Manor Court Community Primary School

invites you to

# Share Our Warmth

Please come and enjoy a warm drink, in a warm space,  
with a warm welcome

**EVERY Wednesday**  
(term time only)

**Beginning 5th October 2022**

**Manor Court School Hall**

Please arrive at 13.15pm  
at the front School gates  
Finish time 15.15pm

NO charge

NO registration

#keepwarmthiswinter

Children and Staff welcome you to play a board game, share a book  
and enjoy a drink and cake while keeping warm in our School Hall this Winter



**CAMBODIA EXPEDITION 2023 INVITES YOU TO DRESS UP AND JOIN US AT:**

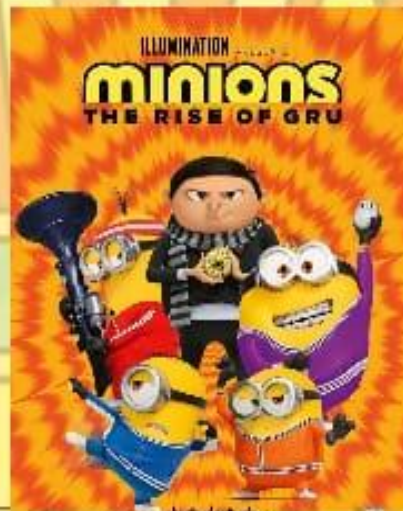
**HOLYROOD ACADEMY**

**Minions: The Rise of Gru**

*All Proceeds Benefits Go To The CAMBODIA EXPEDITION*

**MOVIE NIGHT**

**Friday 10th February 2023 | Doors Open at 6PM**



- **POPCORN**
- **SNACKS**
- **DRINKS**

*Not included in ticket price*

**TICKETS £2 ON THE DOOR. ALL ARE WELCOME**

**PRIZES FOR THE BEST DRESSED!**

**#GENTLEMINIONS**

# Window Wanderland

Create amazing illuminated artwork

for Chard Town Centre

Somerset Art Works are running free family workshops to create illuminated artwork that will be showcased in Chard town centre for the forthcoming Window Wanderland celebrations which include an outdoor projection event in the town on the 11th March at 6:30pm.

A CULTURALLY CHARD project.

**Sessions take place at Chard Museum  
on Saturday 25th February & 4th March**

Join local artist Richard Tomlinson for one, or both, of the activities on offer

## **10am - 12 Papercut Art**

A fun and crafty activity to create beautiful papercut art using old photos of Chard for inspiration. You'll be provided with materials to make wonderful 2D papercut artworks. Images you create will feature in a series of illuminated artworks for Window Wanderland.

## **1 - 4pm Digital People**

Create an animation featuring a bustling Chard High Street. Learn how to use a digital video camera and perform in front of a green screen. Your image will appear as a colourful silhouette in the final artwork. Then visit Window Wanderland, see if you can spot yourself!

All ages welcome, children must be accompanied by an adult.

For more information contact: [info@richtomlinson.co.uk](mailto:info@richtomlinson.co.uk)





SCHOOLS

# TENNIS COACHING SPECIAL OFFER

FROM LA TENNIS COACHING

Special offer to all pupils of Huish Primary,  
Holy Trinity, Primrose and Manor Court

---

**£5 DISCOUNT FROM THE FEB  
HALF-TERM CAMPS**

**£10 DISCOUNT WHEN ENROLLING  
FROM FEB HALF-TERM TILL EASTER**

YEQVIL TENNIS CLUB - WEDNESDAY 15TH FEB, 9AM - 3PM  
SOMERTON TENNIS CLUB - FRIDAY 17TH FEB, 9AM - 3PM  
CHARD TENNIS CLUB - FRIDAY 17TH FEB, 9AM - 3PM

**FOR FURTHER INFORMATION**

CONTACT LUKE ANDREWS

07437 404242 / LATENNIS@HOTMAIL.COM

LTA Accredited Coaches | Equipment Provided | First Aid Trained | DBS Checked

Payments to: A/C 21460919, Sort Code: 40 22 07

Visit us online: [clubspark.lta.org.uk/LATennisCoaching](http://clubspark.lta.org.uk/LATennisCoaching)

