

Dear Parents and Carers

## Spring Term Newsletter 1 – Friday 17<sup>th</sup> January 2025



Happy New Year! Welcome back to school and we hope that you had an enjoyable and peaceful Christmas holiday, and we look forward to working with you throughout the year.

### Key Dates

January 2025	
Tuesday 21 <sup>st</sup> January 2025	Year 5 Cross Country at Holyrood Academy
Friday 24 <sup>th</sup> January 2025	Whole School Art Exhibition at Chard Guildhall Year 4 Overnight Camp Out in the school and Astronomy evening
Friday 31 <sup>st</sup> January	FMCA Quiz night – See poster at the end of the newsletter for more information
February 2025	
Thursday 6 <sup>th</sup> February	Year 5 MC48 trip to Exeter
Friday 7 <sup>th</sup> February	Year 1 trip to St Mary's Church
Wednesday 12 <sup>th</sup> February	FMCA School Disco
Friday 14 <sup>th</sup> February	Last day of this haf term
Monday 24 <sup>th</sup> February	Children return to school & EYC after the half term holidays

### World Religion Day – A message from Mrs Farwell

Our school community came together today for a wonderful celebration of World Religion Day, focusing on sacred spaces and places of worship. The day provided our pupils with valuable insights into the different faiths and the special places where people gather to practice their beliefs.



We were delighted to welcome Reverend Nick, who led an engaging assembly exploring the concept of sacred spaces. He shared fascinating stories about Churches and explained how these buildings serve as both spiritual homes and community gathering places.

Year 5 had a particularly memorable experience, participating in a special workshop with Reverend Nick where they created 'Church biscuits' decorated with beautiful stained glass window designs. Using crushed boiled sweets that melted in the oven to create a stunning translucent effect, the children recreated the vibrant colours and patterns found in church windows. This hands-on activity helped them understand the significance of stained glass in telling biblical stories and creating an atmosphere of reverence. Throughout the day, children across all year groups learned about sacred spaces from the different faiths. A particularly interesting discussion emerged about how people within the same faith tradition might experience and use sacred spaces differently. The children learned that these different approaches to sacred spaces reflect our unique worldviews. Do look at our Facebook or X page for photographs of this wonderful day.

### Whole School Art exhibition – Save the date!

Our annual Whole School Art exhibition, where every child from Foundation Stage to Year 6 will exhibit their work, will be held at The Guildhall on Friday 24<sup>th</sup> January between 09:30 and 17:00. The theme of the children's displays this year is world architecture between the 15<sup>th</sup> and 21<sup>st</sup> Century. Do Save the date for this special event in your diary and try to visit to see the children's work.

### Do you think your child needs a Health Care Plan? A message from Mrs Terry

Parents of children with medical conditions are often concerned that their child's health will deteriorate when they attend school. This is because pupils with long-term and complex medical conditions may require ongoing support, medicines or care while at school to help them manage their condition and keep them well. Others may require monitoring and interventions in emergency circumstances. At Manor Court Community Primary, we want our parents to feel confident that we will provide effective support for their child's medical condition and that our pupils feel safe. In making decisions about the support, we provide; we may need to have a meeting with you to discuss your child's needs. Since September, I have taken on the responsibility of meeting with parents to ensure that Medical Health Care Plans are in place for those children who need one, but if you are unsure or if your child has a health condition that you don't feel the school is fully aware of, please speak to your child's class teacher or make an appointment through the Office to speak to me.



### Catering Manager role

We are looking for a catering manager to lead our excellent on-site catering team who now provide over 200 hot meals, each day, to our wonderful children. If this is a role that interests you, please find the job advertisement at the end of this newsletter and further information, including the job specification, job description and application form can be found in the vacancy section of our school website.

We take child protection extremely seriously at our school. If you have a concern, you can speak to any of the school's designated and trained Child Protection officers: Mr Clode, Miss Gregory, Mrs Terry, Miss Warren, or Mr Talmage. Alternatively, you can ring Children Social Care on 0300 123 2224 or email [childrens@somerset.gov.uk](mailto:childrens@somerset.gov.uk)

### **Manor Court Toddler Group**

Since returning to school after the New Year we have started a new weekly initiative – *The Manor Court Toddler Group!* Our toddler group will be held every Thursday morning (term time only) from 9.30am - 10.30am in the school hall, on a first come, first served basis. We are asking for a 50p donation each week to cover the cost of tea and coffee for parents and drinks for the children.

If you would like to join us, you must book a place by contacting us via messenger or by emailing [toddlers@manorcourt.ppat365.org](mailto:toddlers@manorcourt.ppat365.org). We will need to know your name, your child/children's name and if either of you have any allergies or special requirements. Please note we can only accept children 12 months or above.

### **Whole School Assembly with Reverend Nick**

On Monday morning Reverend Nick led us in our whole school assembly and will now lead us in a Monday assembly at least once a month. We spoke about New Year, new beginnings and the gifts that we can share with each other throughout 2025.



### **SEN Support and Parent Carer Forum – A message from Mr Clode**

We have been made aware that there are groups in the community that are supporting parents of children with SEND and additional needs. Whilst we would hope the majority are there to help and support, we have been told that some are giving misleading advice and we have even been informed of some parents being asked for money for advice on a case-by-case basis.

If you have any questions around SEND or additional needs, or need any advice or signposting, please do not hesitate to speak to me at school or contact the Somerset Parent Carer Forum for professional independent advice.

Please do note that we also host regular well-attended Parent Carer Forums with a welcoming and supportive group of parents and led by independent professionals. The next Parent Carer forum at Manor Court is on Thursday 13<sup>th</sup> March between 9 - 11am.

### **Chard food pantry – A message from Miss Gregory (Early Intervention Officer)**

The cost-of-living crisis is hitting some hard and the cost of food has increased incredibly. The Chard Community Pantry is a local initiative that provides food and household supplies for only £5 a week and is based in the Chard Community Hub in Boden Street.

### **Year 1 Design & Technology Project**

Year 1 have started their new DT project this week - Moving Pictures. They listened to the story of The Gingerbread Man and then made the picture move by making a slider mechanism. They will learn different mechanisms and then make a final design to share with the Foundation Stage children.



### **Have we got your correct details? A message from the school office**

To help to keep your child safe, please make sure that if you know that you have changed your telephone number or email address that you remember to let the school office know so that we can update our records.



### **Snow fall**

Our school looked beautiful amidst the snow last week. Thank you for your support and understanding as we used our contingency plan to keep the school open and the children and staff safe. This beautiful photograph was taken by a member of the staff team who went for a walk with her children.

### **Trim Trail – A message from Mrs Jones**

Can we please remind all parents that children are not to use either Trim Trails at the start, or end of the day, and must only use them under the supervision of school staff during the school day.

### **Safeguarding**

Safeguarding is the responsibility of everybody. In terms of keeping children safe, please “Don't think “What if I'm wrong Think... “What if I am right” If you have any concerns about a pupil, you should report this to a member of staff immediately. If you feel a pupil is at risk or a subject of abuse, you must contact the Designated Safeguarding Team immediately. The Designated Safeguarding Lead is Mr Clode and Deputy Designated Safeguard leads are Miss Gregory, Mrs Terry, and Mr Talmage. The school Safeguarding and Child Protection Governor is Mrs Sue Wakeman.

**Safeguarding  
is everyone's  
responsibility**



### **Eco-Warrior Assembly**

Our Year 5 Eco-Warriors led Wednesday's online assembly from Mr Clode and Mrs Terry's office. They discussed Energy Saving Week, which starts this Friday (17<sup>th</sup>-23<sup>rd</sup> January). They shared the importance of saving energy at home and school and talked about practical changes we could all make to lower our bills and support planet Earth.

---

We take child protection extremely seriously at our school. If you have a concern, you can speak to any of the school's designated and trained Child Protection officers: Mr Clode, Miss Gregory, Mrs Terry, Miss Warren, or Mr Talmage. Alternatively, you can ring Children Social Care on 0300 123 2224 or email [childrens@somerset.gov.uk](mailto:childrens@somerset.gov.uk)



### Online safety news from Miss Hamilton

Internet Matters are putting on a free webinar (29th January) for parents and carers of neurodivergent children and young people who enjoy gaming online. Please find more information here: [Game on: Supporting neurodivergent children in the online world Tickets, Wed 29 Jan 2025 at 19:30 | Eventbrite](#)

### The Community Fridge – A message from Miss Gregory (Early Intervention Officer)

The Community Fridge is for everyone in Chard and the local area to use without referral. It is open, when there is food available, at set times and is staffed by a team of volunteers. The fridge is based in the front room, of Chard's Community Hub (in the old library in Boden Street) and there are also shelves of food in the food room which is at the back of the premises. Items here include dried food, tins, toiletries, pet food, and some baby food. We also have freezers which can have donations from stores and local shops for people to help themselves to. Please see the poster at the end of this newsletter that explains the times that the Hub and Fridge are open.

### Attendance our school expectations – A message from Miss Gregory

Pupil attendance and punctuality is a key focus and priority within our school. Individual attendance is monitored and reviewed on a bi-weekly basis. We would like to kindly remind parents that the school's expectations on individual pupil attendance is 95% and above, with the aim of having 100% pupil attendance. Should your child fall behind the school's expectations a monitoring process is triggered, and we may ask you to come into school to discuss your child's attendance with us. Should you have any questions or concerns relating to your child's attendance please do not hesitate to contact me within the school.



### Staff car park – A message from Mr Talmage

Can we please remind all parents that the staff car park at the rear of the school is not to be used by parents at any point as a place to park during drop off or collection times. Please remember that the school provides free parking permits for parents to park in Sainsbury's carpark at the start and end of the day.

### EYC News from Miss Warren



We have had a great start to our new term. We have welcomed some new children to preschool, and they are settling in well. Our children have been amazing role models and have enjoyed helping the newest children with different activities. We are focusing on the topic of winter and have enjoyed stories such as 'Polar Bear, Polar Bear' and 'One Snowy Night'. As the weather has been colder on some days, please can we remind you to name all items of the children's clothing, including gloves, hats and scarves - thank you.

### FMCA Quiz Night

The FMCA are hosting a Quiz Night on Friday 31<sup>st</sup> January in our School Hall. The quiz will be hosted by Mrs Morton and costs only £3 per adult and £1.50 a child. There is a maximum of six people per team. Please contact the FMCA if you would like to reserve a table through their email address or Facebook page if you would like to reserve a table.

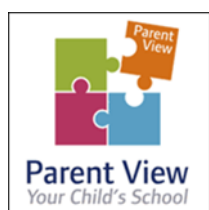
### Zelda the Dragon visits Year 2

Year 2 had a strange visitor on Wednesday. Zelda the bearded dragon came into the classrooms to WOW the children as they started to study their new book in English – George's Dragon goes to school by Claire Freedman!



### Please help us – A message to all parents (especially our new Foundation Stage parents)

Please be mindful of parents and children trying to get past the Foundation Stage area and into the main school. Please try to not block the pathway as it is exceedingly difficult for wheelchair users or parents with buggies and prams to get past. Thank you.



### Ofsted Parent view

Parent view is a way in which Ofsted surveys the parents of children within a school to find out their views of the school and how it can be improved further. These opinions become part of the overall judgment of the school. If you would like to pass on your opinions to Ofsted, please complete the survey on the parent view website. The website can be found at [www.parentview.ofsted.gov.uk](http://www.parentview.ofsted.gov.uk)

We take child protection extremely seriously at our school. If you have a concern, you can speak to any of the school's designated and trained Child Protection officers: Mr Clode, Miss Gregory, Mrs Terry, Miss Warren, or Mr Talmage. Alternatively, you can ring Children Social Care on 0300 123 2224 or email [childrens@somerset.gov.uk](mailto:childrens@somerset.gov.uk)

## Drama Club – Oliver with a Twist

Mrs Guyett and Mrs Birks are very excited to see everyone at the first Drama Club of 2025 yesterday, where they introduced the show that Drama Club will be presenting in July. Oliver With a Twist!



## Chard Hockey Club

Chard Hockey Club are looking for new youth players. Please see the poster at the end of this newsletter for information.



## Celebration Assemblies

Family members are very welcome to join us at our EYFS & KS1 and KS2 celebration assembly on Friday's. Our assemblies are held every week apart from when we do require the school hall for a whole school event.

The EYFS & KS1 Assembly will start at 08:50 in the school hall and the KS2 Assembly will start at 10:50 in the school hall.

Please enter the school site through the main gate at the front of the school and enter the hall via the normal door, after crossing the Key Stage 1 playground and walking

around the back of the hall.

## Wrap around care booking reminder from the school office

Our wrap around care provision is extremely popular but we are having an increasing number of children attend who have not been booked on to sessions. Whilst we make every effort to accommodate them, we cannot always guarantee that there is space.

Please may we remind you of the following booking deadlines:

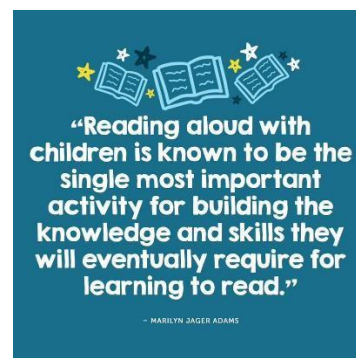
After school care – 14:00 on the day. Breakfast club – 14:00 the day before.

## Reading expectations – A message from Mrs Terry

At Manor Court Community Primary School, we seek to ensure that children are supported to be confident, lifelong learners with a love of reading. Reading plays a very important role in developing children culturally, emotionally, and socially and we believe literature plays a key role in such development. Reading enables pupils both to acquire knowledge and build on what they already know.

In school children in KS2 are heard reading on a 1:1 basis at least once a week by their class teacher and Learning Support staff and this is much more frequently in Foundation Stage and KS1. Those pupils not at an expected reading level are heard daily. The EYFS and Key Stage 1 reading books follow a clear progression of banding, ensuring fluency is developed. This academic year, you may find your child has a book sent home that they have already read at school, and this is something that is now promoted in all schools. The more a child reads, the larger their vocabulary becomes. When a child reads or hears the same book multiple times, they become familiar and comfortable with a greater number of words. Fluency is the ability to read text "accurately, quickly, and with expression."

Repetitive reading allows a child to read without stumbling or stopping, and reading time becomes more pleasant for everyone. Once a child masters one book, it makes moving on to another more appealing. Reading comprehension is the ability to understand all the components of a story — from plot to character development to symbolism. Comprehension is "the essence" of reading. Each time your child reads or hears a book read to them; they learn more about the story itself. Each pass through the text or illustrations allows them to dive into the story's meaning, preparing them for more complex narratives down the road. Children who progress from the banded scheme to 'free readers' can access their class library, and the school library, and can be supported to select appropriate books by staff. Pupils are encouraged to take home fiction and non-fiction texts. Children are expected to read at home five times a week, ideally daily, as this helps to develop confident and fluent readers. We would recommend 20 minutes of reading a day. Children's reading logs are checked to ensure this is taking place. Where children are not reading the required amount in school, they are invited to attend a lunchtime reading club. There is also opportunity to read to a member of staff at Homework Club and After-school Club.



## Pupil Premium

The Pupil Premium is additional funding that the Government provides for each child who they believe may be disadvantaged in achieving their best in education. At Manor Court Community Primary School, we provide high quality education and enrichment opportunities for each pupil regardless of ability or background. However, it is useful to receive this funding for all children entitled to it. If your children are entitled to free school meals or a member of the household is currently in receipt, or has been in the last six years, of Universal credit then please do apply through this hyperlink or ask in the school office for a form that we can send off for you.

[https://secure1.somerset.gov.uk/forms/PortalShowForm.asp?fm\\_formalias=freeschoolmeal](https://secure1.somerset.gov.uk/forms/PortalShowForm.asp?fm_formalias=freeschoolmeal)

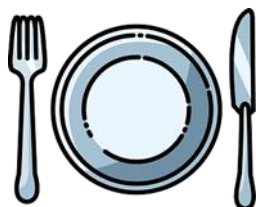
We take child protection extremely seriously at our school. If you have a concern, you can speak to any of the school's designated and trained Child Protection officers: Mr Clode, Miss Gregory, Mrs Terry, Miss Warren, or Mr Talmage. Alternatively, you can ring Children Social Care on 0300 123 2224 or email [childrens@somerset.gov.uk](mailto:childrens@somerset.gov.uk)

### School uniform provider – A message from Mrs Hunt (Assistant School Business Manager)

As you will now know, our school uniform provider is South-West School wear. The uniform can be purchased from the Taunton store, or online. Please see the letter that was sent home via ParentPay and can be found on our website for further details about the service that will be provided to Manor Court families.

### Wrap around care telephone number

The telephone number for our wrap around care provision (breakfast & after school club) is **07471 412147** Please save this telephone number to your phone if you use wrap around care. Breakfast club is held in the school hall and our after-school wrap around care is held in The Den (a room in the Year 1 block). To ensure that we have the correct ratios please ensure that you contact the school office the day before you require club. We appreciate that emergencies sometimes happen.



### Hot meals parental feedback – A message from Mrs Hunt

Our onsite kitchen is now providing a hot meal for average over 200 children each weekday and it appears to us that the children within the school are enjoying the meal that is being offered to them and parents have selected for them through ParentPay.

We would like to ask parents to provide feedback, positive or negative, as to the food that we are providing to your child. If you would like to share this feedback with us, please do email the school office.

### Can you help?

The 'Chard Together' event, which showcased a number of local artists, businesses, food, charities and cultures last year returns again in 2025, on Saturday 22nd March. The committee are currently seeking a face-painter for the event. If you know of anyone suitable, please email the office or pass some details to Mrs Terry. Keep your diaries free for what promises to be another successful day celebrating all that is Chard.

### Remote learning in case of the need to close our school this winter

We are in the time of the year when the weather becomes unsettled and schools may require closing because of poor weather, treacherous driving conditions or heating failures. If we do require to shut the school at any point, work packs are available on our school website and can be printed at home.

<https://www.manorcourtcommunityprimary.co.uk/remote-learning-in-case-of-school-closure/>

Please do make sure that your child is equipped with the correct clothing for cold weather.



### After school enrichment clubs – A message from Mr Clode

Please can I politely remind all parents that our afterschool enrichment clubs finish at 16:15 and ask you to arrive promptly to collect your children.



### The FMCA needs you!

The FMCA is a group of parent volunteers who spend time raising money (whilst having fun) for activities or equipment to be used for the children in the school. The work that they do is vital, and the committee needs more volunteers to help them achieve more for the children.

If you would like to find out more about their work and how you can get involved, please do email them on [contactfmca@gmail.com](mailto:contactfmca@gmail.com) or contact them through their Facebook page.

Thank you for your ongoing support.



Mr Luke Talmage  
Headteacher



Mr Alan Clode  
Deputy Headteacher and Inclusion Leader

**Catering Manager**  
**Manor Court Community Primary School, Chard, Somerset, TA20 2ES**  
[www.manorcourtcommunityprimary.co.uk](http://www.manorcourtcommunityprimary.co.uk)

**Grade 12:12 - 19 - £14.36 to £16.10 per hour**  
**Term time only plus an additional seven days throughout the year**  
**26.25 hours a week, 08:45 to 14:00 on Monday to Friday**  
**Fixed Term for two years in the first instance**  
**Employers pension contributions 24.4%**

Manor Court Community Primary School (proud to be part of PPAT - the Preston Primary Academy Trust) is a large fourteen class community primary school on the Somerset and Devon border. We are a busy, inclusive, and friendly school. We take pride in providing over 220 meals a day to the children who attend our school. Our school ethos is built upon 'caring and learning together' and we believe that this is evident in all that we do for our children and staff.

**Main Duties and responsibilities**

- To operate and further develop the catering services at the school to the set and maintain high standards.
- To ensure that the school's reputation for the highest quality food and services is established and maintained.
- To ensure that the school maintains a Food Hygiene Rating of 5.
- To ensure that all catering operations are conducted according to Somerset County Council and School catering and other Policies.
- To administer catering controls, keep adequate records and ensure proper returns are rendered.
- To recruit, induct, train and develop staff to deliver a quality led service in a customer focused manner.
- Responsible for the management of all catering team personnel, their training, motivation and performance.
- Responsible for the preparation, cooking and presentation of meals through direct involvement and delegation of tasks in order to ensure that the standards and costings defined by the school are achieved.
- Ensure that the cleaning is of the highest standard at all times and passes the regular cleaning/Health and Safety audits.
- Responsible for the purchase of all consumables, non-consumables and light equipment within the limits of the budget liaising with the school Finance Officer reordering and invoicing.

Please apply by completion of the application form, outlining your skills and experience relevant to the post, which is available from the school and the PPAT website. Visits to the school are warmly welcome.

Your completed application form can be posted to the school or emailed to [office@manorcourt.ppat365.org](mailto:office@manorcourt.ppat365.org)  
Please address it for the attention of Mrs Diana Hunt, Assistant school Business Manager.

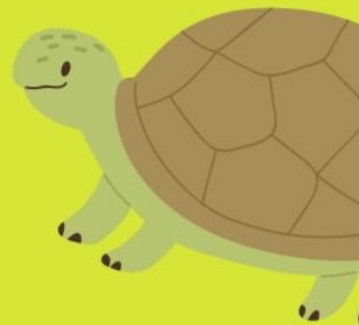
**Closing Date: Midday on Monday 3<sup>rd</sup> February 2025.**

**Interview Date: Week beginning Monday 10<sup>th</sup> February 2025.**

**Start Date: Required as soon as possible.**

Please note: Early applications are encouraged. Manor Court Community Primary School reserves the right to interview and appoint prior to the closing date, should the school be able to appoint a suitable candidate.

Due to the expected number of applications, we will only inform applicants if they have been shortlisted and invited to attend an interview. If you have not heard from the school by Friday 7<sup>th</sup> February, you have not been successful on this occasion.



**CREATURES GREAT & SMALL**

# PETTING FARM

**AT WELLS CATHEDRAL**

**Saturday 25 January 2025**

**11.00am–3.00pm**

**Admission: Included with entry  
to the Cathedral**



**Come and meet a variety of furry friends as the Cathedral hosts Puxton Park's petting farm! Enjoy the opportunity to pet, groom, and learn about these beautiful animals and how we can take care of them.**



# Community Fridge

**Monday**

2pm to 4pm

**Tuesday**

Closed

**Wednesday**

10.30am to  
12.30pm

**Thursday**

10am to  
midday

**Friday**

4pm to  
5.30pm

**Saturday**

Closed

**Sunday**

Closed

# MANOR COURT COMMUNITY PRIMARY SCHOOL ANNUAL ART EXHIBITION



SHOWCASING  
THE WORK OF  
ALL PUPILS  
FROM THE  
EARLY YEARS TO  
YEAR 6

ARCHITECTURE FROM  
15TH - 21ST CENTURY

HOSTED BY THE  
MANOR COURT ARTS  
COUNCIL

**GUILDHALL  
CHARD**

**FRIDAY 24TH  
JANUARY 2025  
9:30AM- 5:00PM**



**JOIN US**



**Come along and have some fun while raising money to help fund amazing experiences for the students at Manor Court.**

**Prize for the winning team, plus a raffle on the night.**

**Special welcome to our guest quiz master... Janet Morton**

**To book a table, please email [contactFMCA@gmail.com](mailto:contactFMCA@gmail.com)**

**Friday 31st January 2025**

**Doors open at 6pm for 6.30pm start**

**Adults £3.00 Children £1.50 Maximum of 6 per Team**

**Alcohol, soft drinks and snacks will be available.  
Only alcohol purchased onsite can be consumed.**

# Chard Hockey club

Junior Training for ages 7+

No experience  
needed and sticks  
available

Wednesdays 7-8pm  
Girls training

Thursdays 7-8pm  
Boys training

Contact: [welfare@chardhockeyclub.co.uk](mailto:welfare@chardhockeyclub.co.uk)



CHARD COMMUNITA  
**WAFLE**  
A PLACE FOR EVERYONE

# WARM MEALS FOR OUR COMMUNITY

*Starting from Tuesday the 10th of December we will be offering hot meals between 2:30pm- 4:30pm to help those who don't have access to warm and nutritious meals.*

*This is aimed at helping families and individuals have access to:*

- Nutritious food
- A warm space
- Friendly company
- Affordable filling meals

## PAY WHAT YOU CAN IF THAT IS NOTHING THAT IS OKAY

*Come along, enjoy a hot meal and connect with your community.  
Together, we're here for each other.*

*6a Holyrood Street Chard, Ta20 2ah  
Contact us on: 01460 497578*

# FMCA Events Calendar



## 2024-2025

**23 Oct**

FMCA Annual General Meeting

**22 Nov**

Christmas Wreath Workshop

**03 Dec**

Break the Rules Day

**14 Dec**

Children's Table Decoration Workshop

**31 Jan**

Winter Quiz

**12 Feb**

Non School Uniform & Disco

**06 Mar**

World Book Day- Talmage Treat Bar

**28 Mar**

Easter Bingo

**16 May**

Colour Run

Other events TBC



# Manor Court Community Primary School School Terms and Holidays 2024-2025

September 2024						October 2024						November 2024								
M		2	9	16	23	30	Mo			7	14	21	28	M			4	11	18	25
Tu		3	10	17	24		Tu		1	8	15	22	29	Tu			5	12	19	26
W		4	11	18	25		We		2	9	16	23	30	W			6	13	20	27
Th		5	12	19	26		Th		3	10	17	24	31	Th			7	14	21	28
F		6	13	20	27		Fr		4	11	18	25		F		1	8	15	22	29
Sa		7	14	21	28		Sa		5	12	19	26		Sa		2	9	16	23	30
Su	1	8	15	22	29		Su		6	13	20	27		Su		3	10	17	24	
December 2024						January 2025						February 2025								
M		2	9	16	23	30	M			6	13	20	27	M			3	10	17	24
Tu		3	10	17	24	31	Tu			7	14	21	28	Tu			4	11	18	25
W		4	11	18	25		W		1	8	15	22	29	W			5	12	19	26
Th		5	12	19	26		Th		2	9	16	23	30	Th			6	13	20	27
F		6	13	20	27		F		3	10	17	24	31	F			7	14	21	28
Sa		7	14	21	28		Sa		4	11	18	25		Sa		1	8	15	22	
Su	1	8	15	22	29		Su		5	12	19	26		Su		2	9	16	23	
March 2025						April 2025						May 2025								
M		3	10	17	24	31	M			7	14	21	28	M			5	12	19	26
Tu		4	11	18	25		Tu		1	8	15	22	29	Tu			6	13	20	27
W		5	12	19	26		W		2	9	16	23	30	W			7	14	21	28
Th		6	13	20	27		Th		3	10	17	24		Th		1	8	15	22	29
F		7	14	21	28		F		4	11	18	25		F		2	9	16	23	30
Sa	1	8	15	22	29		Sa		5	12	19	26		Sa		3	10	17	24	31
Su	2	9	16	23	30		Su		6	13	20	27		Su		4	11	18	25	
June 2025						July 2025						August 2025								
M		2	9	16	23	30	M			7	14	21	28	M			4	11	18	25
Tu		3	10	17	24		Tu		1	8	15	22	29	Tu			5	12	19	26
W		4	11	18	25		W		2	9	16	23	30	W			6	13	20	27
Th		5	12	19	26		Th		3	10	17	24	31	Th			7	14	21	28
F		6	13	20	27		F		4	11	18	25		F		1	8	15	22	29
Sa		7	14	21	28		Sa		5	12	19	26		Sa		2	9	16	23	30
Su	1	8	15	22	29		Su		6	13	20	27		Su		3	10	17	24	31

Key:	
	School Holiday
	Bank Holiday
	Term Time
	Inset Days

Term dates summary:	
<b>Term 1:</b> 03 September – 25 October 2024 (39 days)	
<b>Term 2:</b> 04 November – 20 December 2024 (35 days)	
<b>Term 3:</b> 06 January – 14 February 2025 (30 days)	
<b>Term 4:</b> 24 February – 04 April 2025 (30 days)	
<b>Term 5:</b> 22 April – 23 May 2025 (23 days)	
<b>Term 6:</b> 02 June – 23 July 2025 (38 days)	<b>TOTAL = 195</b>

Bank and public holidays 2024/25			
Christmas Day	25 December 2024	Easter Monday	21 April 2025
Boxing Day	26 December 2024	May Day Bank Holiday	05 May 2025
New Year's Day	01 January 2025	Spring Bank Holiday	26 May 2025
Good Friday	18 April 2025	Summer Bank Holiday	25 August 2025

Academy, Free Schools, Foundation & Voluntary Aided schools can set their own term dates and may differ from ours. Please check with the individual schools for their term dates.

We take child protection extremely seriously at our school. If you have a concern, you can speak to any of the school's designated and trained Child Protection officers: Mr Clode, Miss Gregory, Mrs Terry, Miss Warren, or Mr Talmage. Alternatively, you can ring Children Social Care on 0300 123 2224 or email [childrens@somerset.gov.uk](mailto:childrens@somerset.gov.uk)

# **TOGETHER ON TUESDAY**

A club for primary school children  
and their parents, carers & siblings

**Join us for Crafts, Cooked Tea,  
Songs & Story**

New craft each week

Cooked tea provided

Short bible story and song

**Every Tuesday during term  
time**

**Starting the 10th September**

**3.30pm - 5pm**

**St Mary's Church rooms**

**THIS IS A FREE CLUB BUT DONATIONS ARE WELCOME**



Image © Luxmuralis

LUXMURALIS

# SPACE

IMMERSIVE SOUND + LIGHT SHOW

28 Jan — 1 Feb 2025



Tickets: £6—£12; available via [wellscathedral.eventbrite.co.uk](https://wellscathedral.eventbrite.co.uk)

We take child protection extremely seriously at our school. If you have a concern, you can speak to any of the school's designated and trained Child Protection officers: Mr Clode, Miss Gregory, Mrs Terry, Miss Warren, or Mr Talmage. Alternatively, you can ring Children Social Care on 0300 123 2224 or email [childrens@somerset.gov.uk](mailto:childrens@somerset.gov.uk)